



# Eubio-NBS (c10)

## Plant & Soil Biocatalyst Liquid

### PRODUCT DESCRIPTION:

**Eubio-NBS (c10)** has a positive impact on natural biological processes that are essential for productive soil and plants. Use of Eubio-NBS (c10) improves abiotic stress tolerance and supports conditions for better plant establishment.

### CONTAINS NON-PLANT FOOD

#### INGREDIENT:

100% Liquid Supernate from fermented plant material.

### DIRECTIONS FOR USE:

The application rate is 10 to 12.8 oz per acre (10 acres per gallon) of Eubio-NBS (c10) for both soil and foliar applications. It is recommended to apply a fall or spring soil application and one to two foliar applications during the season depending on crop value.

Soil Application: Eubio-NBS (c10) can be applied as follows: broadcast or strip-tilled Fall or Spring, in furrow and through surface or subsurface irrigation.

Foliar Application: Eubio-NBS (c10) can be applied once or multiple times during the season at optimum vegetative and reproductive status of a crop.

Manure Application: Eubio-NBS (c10) can be mixed into liquid manure at the rate of 12.8 oz per acre (10 acres per gallon) of Eubio-NBS (c10).

### STORAGE:

Normal Warehousing. Product is freeze/thaw stable. Shelf life three years.

Growers/producers are required to contact their organic certifying agency for use approval of this product in organic production.

### LIMITATION OF LIABILITY:

Due to system variations and other additives that may be present, please discuss usage of Eubio-NBS (c10) with our technical representative. Eubio-NBS (c10) has no known negative impact on natural biological processes.

### KEEP OUT OF REACH OF CHILDREN

This product does not meet the regulatory definition of a hazardous chemical under 29 CFR 1910.1200. However, good industrial hygiene practices should be used in the manufacture and handling of the product.

**Made in the U.S.A.**



## Eubio-NBS (c10) applied in-furrow on corn at planting time

### Corn on Corn

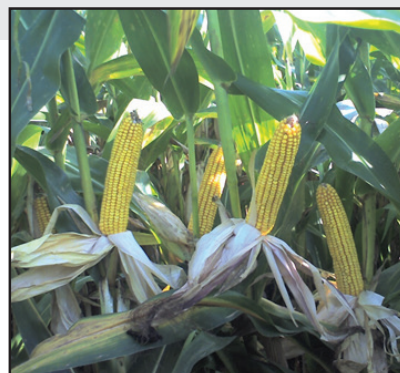


**Control**



**Eubio-NBS (c10)**

In-Furrow Application 12.8 oz/A



## Eubio-NBS (c10) Applied to Corn In-furrow At-plant 12.8 oz/A

### Observation on Corn:

Eubio-NBS (c10)	Control
• Increased rows on corn ears	• Tip back
• Increased ear length	• Less ear length
• Increased health	• Less healthy than <b>Eubio-NBS (c10)</b>
• Green leaves to ground	• Disease issues
• Improved stay green	• More ear mold
• Less ear mold	

### Next Year Observations Corn on Corn:

- Less standing water on **Eubio-NBS (c10)** area
- Faster corn emergence
- Improved early crop vigor
- Stayed healthier throughout the season





# Eubio-NBS (c10) Applied In-Furrow on Corn<sup>1</sup>

*NBS = Natural Biological Stimulant*

Field	Treatment (1st Year)	Yield Monitor Yield (bu/A)
R26	Eubio-NBS (c10) <sup>2,3</sup>	165.0
	Control	147.2 <hr/> +17.8 bu/A advantage
R28	Eubio-NBS (c10) <sup>2,3</sup>	136.7
	Control	97.5 <hr/> +39.2 bu/A advantage
R13	Eubio-NBS (c10) <sup>2,3</sup>	137.7
	Control	120.6 <hr/> + 17.6 bu/A advantage

The grower was extremely satisfied with the 58 pounds test weight on Eubio-NBS (c10) treated fields.

<sup>1</sup>Location: Miller, South Dakota

<sup>2</sup>Applied with NPF (Natural Plant Food) 10 gal/A, Starter Plus 1 qt/A & Micronutrient Mix 10 oz/A

<sup>3</sup>Eubio-NBS (c10) applied at 12.8 oz/A

No in-furrow additives

**Contact:**

Dr. Jim Ladlie

President

507-373-1325

[jladlie@profitproag.com](mailto:jladlie@profitproag.com)



**Crop Advantage Plus Program**





# Eubio-NBS (c10) Applied In-Furrow at Planting on Corn

*NBS = Natural Biological Stimulant*

Field	Treatment (1st Year)	Yield Monitor Yield (bu/A)	Yield Advantage (bu/A)
RFW <sup>1</sup>	Eubio-NBS (c10) <sup>2</sup> Control	198.9 179.7	<b>+19.2 bu/A Advantage</b>
RFE	Eubio-NBS (c10) <sup>1</sup> Control	203.5 185.6	<b>+17.9 bu/A Advantage</b>
SH	Eubio-NBS (c10) <sup>1</sup> Control	196.4 181.3	<b>+15.1 bu/A Advantage</b>
KJN	Eubio-NBS (c10) <sup>1</sup> Control	208.6 190.1	<b>+18.5 bu/A Advantage</b>
KJS	Eubio-NBS (c10) <sup>1</sup> Control	197.8 189.2	<b>+8.6 bu/A Advantage</b>

<sup>1</sup> Applied Starter Plus at 1 qt/A and NPF (Natural Plant Food) at 7 gal/A on both Eubio-NBS & Control Plots

<sup>2</sup> Eubio-NBS (c10) applied at 12.8 oz/A in-furrow at planting with starter

- Planting date: May 13<sup>th</sup>
- Harvest date: October 22<sup>nd</sup>
- Corn on soybean ground
- Corn variety: Viking B7396RR
- Location: Albert Lea, MN

**Contact:**

Dr. Jim Ladlie

President

507-373-1325

[jladle@profitproag.com](mailto:jladle@profitproag.com)



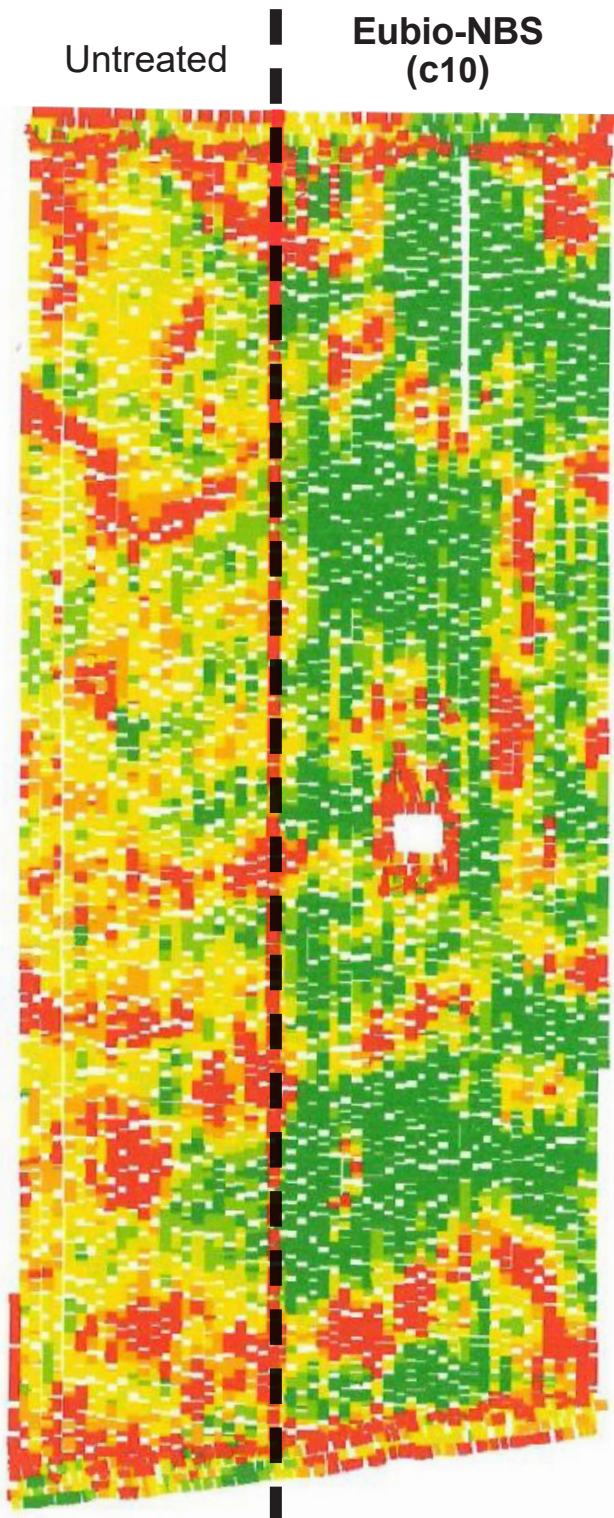
**Crop Advantage Plus Program**

# Eubio-NBS (c10)

## Applied 2012

### in Corn Starter at Planting

#### GRAIN YIELD MONITOR RESULTS



Eubio-NBS (c10)*	=	220.18 bu/A
Untreated Control	=	201.55 bu/A
	+	<b>18.63 bu/A Advantage</b>

18.63 bu/A advantage  
 x \$3.50/bu corn  
 = **\$65.21**

\*Eubio-NBS (c10) applied in starter fertilizer at 12.8 oz/A

Location of trial: Grandma's  
 Matt Wangen  
 Hayward, MN  
 507-383-5155

#### Yield (dry) (bu/A)

230.00 - 390.94
220.00 - 230.00
210.00 - 220.00
200.00 - 210.00
190.00 - 200.00
10.06 - 190.00

CASE IH AFS Basic Software

Grower: Matt Wangen  
 Farm: Grandma's  
 Year: 2012  
 Operation: Grain Harvest  
 Crop/Product: CORN  
 Avg Moisture: 16.12%

#### Treatment

#### Avg Yield

Eubio-NBS (c10)	220.18 bu/A
Untreated Control	201.55 bu/A

**Yield Advantage +18.63 bu/A**





# Eubio-NBS (c10) Applied In-Furrow at Planting on Soybeans

Field	Treatment (1st Year)	Yield Monitor Yield (bu/A)
RFW	Eubio-NBS (c10) <sup>1</sup> Control <sup>2</sup>	60.3
		52.1
		<hr/> +8.2 bu/A advantage

<sup>1</sup>Eubio-NBS (c10) applied at 12.8 oz/A in-furrow at planting with starter

<sup>2</sup>Applied Starter Plus at 1 qt/A and NPF (Natural Plant Food) at 7 gal/A on both Eubio-NBS (c10) and control plots

- Planting date: May 16<sup>th</sup>
- Harvest date: October 21<sup>st</sup>
- Soybeans on corn ground
- Soybean variety: Viking 2300 R2
- Location: Albert Lea, MN

**Contact:**

Dr. Jim Ladlie

President

507-383-1325

[jladlie@profitproag.com](mailto:jladlie@profitproag.com)



**Crop Advantage Plus Program**



# Eubio-NBS (c10) Applied In-Furrow at Planting on Winter Wheat

NBS = Natural Biological Stimulant

Treatment	In-Field Program	Rate/Acre	Yield (bu/A)	Moisture	TW	Cost/Acre	Return/Acre
Commercial	11-52-0	60 lbs	64.0	14.2%	60.7	\$22.40 (0.39/lb 11-52-0)	\$352.00 (64.0 bu x \$5.50/bu)
ProfitPro's	NPF + Starter Plus + Eubio-NBS (c10)	10 gallons 1 qt 12.8 oz	72.5	13.5%	60.3	\$16.75 <sup>1</sup>	\$398.75 (72.5 bu x \$5.50/bu)
Difference			8.5 bu/A	0.7%	-0.4	-\$6.65 <sup>2</sup>	\$46.75 <sup>3</sup>

<sup>1</sup>NPF (Natural Plant Food) (Owned) + Starter Plus = Eubio-NBS (c10) = \$10.00/A + \$16.75/A

<sup>2</sup>Location: Millerdale Colony, South Dakota

<sup>3</sup>Bottom Line Increase Return = \$53.40/A (\$46.75 yield advantage + \$6.65 cost advantage)

## Contact:

Dr. Jim Ladlie  
President  
(507)383-1325 (cell)  
jladlie@profitproag.com



Crop Advantage Plus Program



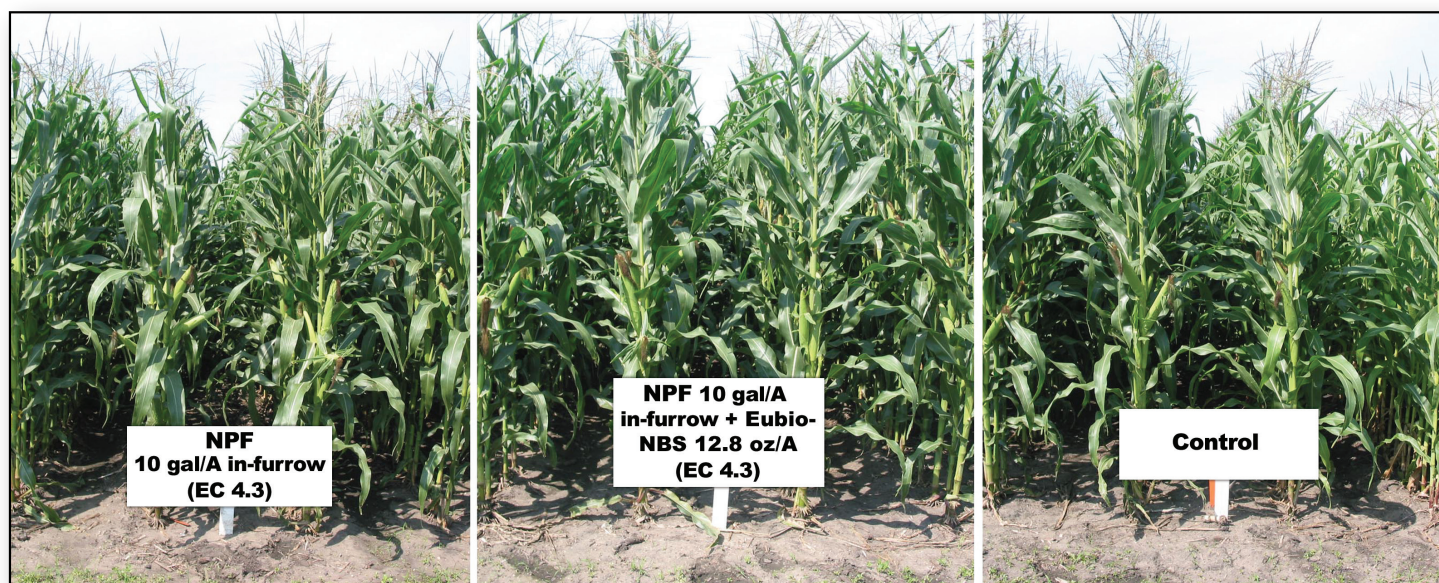
# Yield and Quality Benefits of adding **Eubio-NBS (c10) to NPF™** applied in-furrow on corn

- 90 lbs Nitrogen applied on all plots
- Corn on corn
- 4 replications (yield)

NPF = Natural Plant Food which is completely digested livestock manure  
NBS = Natural Biological Stimulant

Treatment	EC	Application Rate/A	Brix 8/6/07	Yield Advantage
NPF	4.3	10 gal	12.3	117%
NPF + Eubio-NBS (c10)	4.3	10 gal + 12.8 oz	14.8	128%
Control	---	---	8.9	100%

*EC (electrical conductivity) measures the salt content of manure. The lower the number, the lower the salt content.*



More from Every Acre, Every Animal & Every Gallon of Manure



Innovative Manure Management  
**manuremaster.com**  
"The Manure Treatment Experts"



Green Regenerative & Sustainable Technology



# Eubio-NBS (RTU)

## Livestock Drinking Water Enhancer

### PRODUCT DESCRIPTION:

**Eubio-NBS (RTU)** is a water enhancer that acts as a natural biological stimulant. It optimizes and stimulates the biological water medium to help increase already existing natural processes that are essential to livestock operations.

Eubio-NBS (RTU) is biodegradable, non-toxic, non-hazardous, non-corrosive, non-irritating and does not require PPE.

### GUARANTEED ANALYSIS:

Cellulase Activity (min)	40,000 cellulase units/gal
Protease Activity (min)	20,000 hemoglobin units/gal
Amylase Activity (min)	76,000 amylase units/gal
Lipase Activity (min)	2,000 lipase units/gal

### INGREDIENTS:

Contains all natural enzymes including Cellulase, Protease, Amylase and Lipase.

### USAGE AND APPLICATION RATE:

Usage is dependent upon system variables and targeted efficiencies. System enhancement can be achieved at dosage rates of 15 ppm to 50 ppm per daily flow rate. A dosage rate of 25 ppm is a good starting point. The dosage rate can be adjusted up or down depending on animal performance. If the animal's stool becomes loose, lower the dosing rate.

Eubio-NBS (RTU) can be applied as a wet spray or mist in livestock facilities at 5 ppm.

### STORAGE:

Normal Warehousing. Product is freeze/thaw stable. Shelf life three years.

### LIMITATION OF LIABILITY:

Due to system variations and other additives that may be present, please discuss usage of Eubio-NBS (RTU) with our technical representative.

Eubio-NBS (RTU) has no known negative impact on natural biological processes.

**KEEP OUT OF REACH OF CHILDREN**

**Made in the U.S.A.**





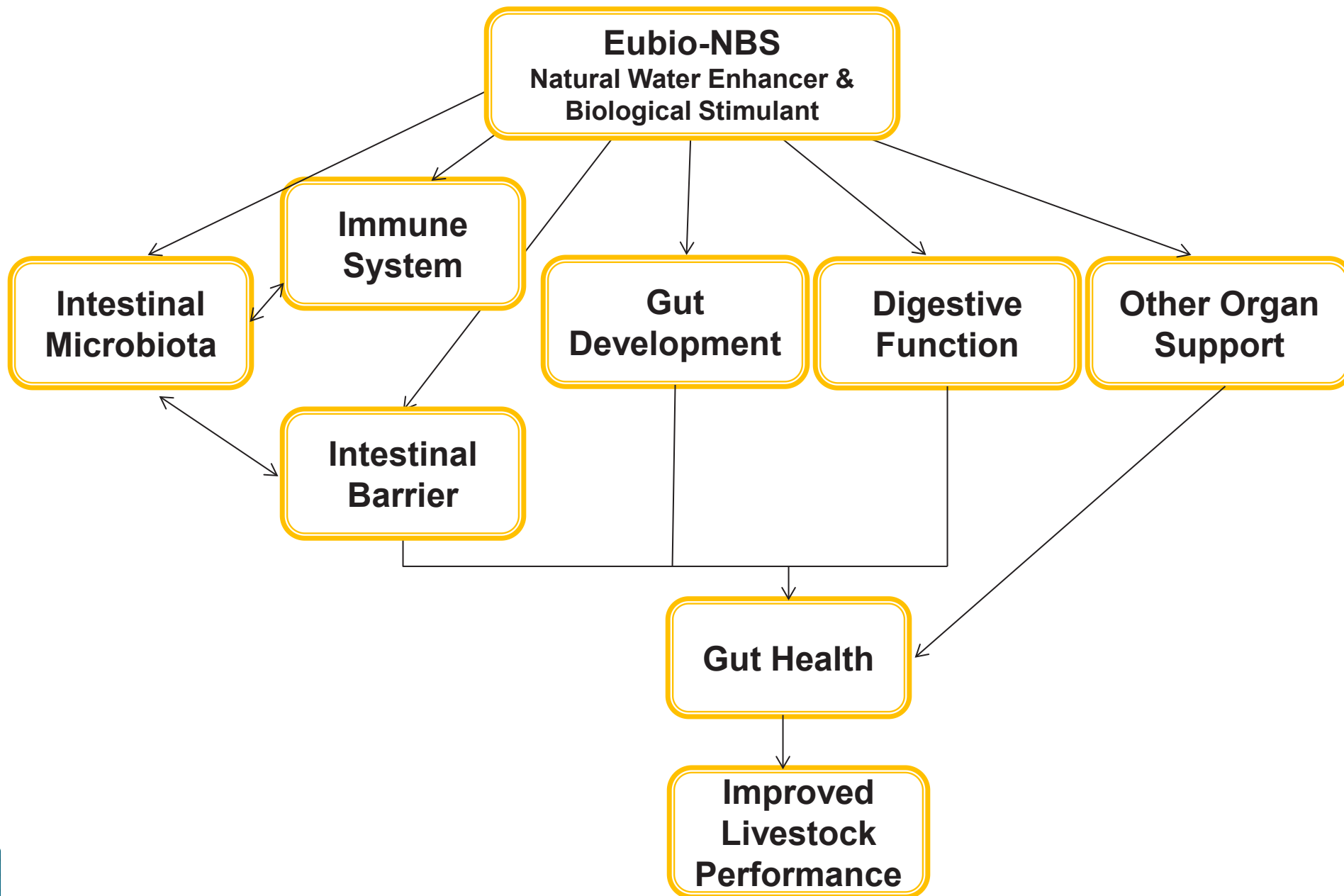
# **Eubio-NBS (RTU)**

## **Livestock Drinking Water Enhancer**

### **The identifiable benefits are:**

- ◆ Boosts the immune system to improve animal vitality and health
- ◆ Increases water and feed intake
- ◆ Improves feed efficiency and ADG
- ◆ Enhances libido and breed back
- ◆ Enhances the oxygen levels in treated water
- ◆ Cleans out water lines
- ◆ Helps eradicate the pathogens in water
- ◆ Aids in ease of facility cleaning
- ◆ Aids in the bioaugmentation of manure







# Warren Krohn, Nicollet, MN

## Eubio-NBS (RTU)

### Finishing Pigs Trial

Performance Parameter	Eubio-NBS (RTU)	Control	Difference
<b>Facility Turns:</b>			
• Days/turn	114	122	-8
• Weeks/turn	16.3	17.4	-1.1
• Turns/year	3.20	2.99	+0.21
<b>Performance Factors:</b>			
• Average days on feed	110	116	-6
• Total pig days	106,278	108,042	-1,766
• Pounds feed/head	541	590	-49
• Average daily grain	1.78	1.76	+0.02
• Feed per gain	2.75	2.88	-0.13
• ADFI	4.89	5.07	-0.18





# Eubio-NBS (RTU)

## Livestock Drinking Water Enhancer

### Swine Operation

---

Evaluate or observe in a swine operation; *Parameters to measure and evaluate during trial:*

#### Sows

- ◆ Average weight gain
- ◆ Average breed back
- ◆ Average pregnancy rate
- ◆ Average feed intake (pounds/pig)
- ◆ Average feed efficiency
- ◆ Average feed digestion
- ◆ Average body condition
- ◆ Average birthing ease and cleaning
- ◆ Average milk production

#### Piglets on Sow

- ◆ Average uniformity at birth
- ◆ Average mortality
- ◆ Average alertness, energy & contentment
- ◆ Average wean weights
- ◆ Average overall health

#### Nursery & Finishers

- ◆ Average overall health
- ◆ Average mortality
- ◆ Average days/turn
- ◆ Average turns/year
- ◆ Average daily gain
- ◆ Average feed efficiency
- ◆ Average daily feed intake
- ◆ Average pounds feed per head

#### Manure

- ◆ Stool consistency
- ◆ Changes in feed digestion
- ◆ Amount of undigested feed in stool
  - Screen manure for solids/fiber
    - Beginning of month
    - End of month
    - Collect a sample to keep each time
- ◆ Odor changes (smell – strong, medium or less)
- ◆ Fly change

#### Facility

- ◆ Facility clean-up





# Eubio-NBS (RTU)

## Livestock Drinking Water Enhancer

### Beef Operation

Evaluate or observe in a beef operation; *Parameters to measure and evaluate during trial:*

#### Beef

- ◆ Animal health
- ◆ Feed intake
- ◆ Feed efficiency
- ◆ Feed digestion
- ◆ Average Daily Gain

#### Facility

- ◆ Cleaning up of facility

#### Manure

- ◆ Stool consistency
- ◆ Changes in feed digestion
  - Amount of undigested feed in stool
  - Screen manure for solids/fiber at beginning and end of each month on the Eubio-NBS (RTU)
  - Collect a sample to keep each time
- ◆ Odor change
- ◆ Fly change
- ◆ Manure consistency





# Eubio-NBS (RTU)

## Livestock Drinking Water Enhancer

### Dairy Operation

Evaluate or observe in a dairy operation; *Parameters to measure and evaluate during trial:*

#### Cows

- ◆ Average herd (cow) health
- ◆ Average breed back
- ◆ Average herd pregnancy rate
- ◆ Average feed intake (pounds/cow)
- ◆ Average feed efficiency
- ◆ Average feed digestion
- ◆ Average hoof health
- ◆ Average DMI (dry matter intake)
- ◆ Average body condition
- ◆ Average cow cud chewing/  
rumination scoring

#### Calf

- ◆ Average herd (calf) health
- ◆ Average calf mortality
- ◆ Average daily gain on calves

#### Milk

- ◆ Average milk production
- ◆ Average butter fat
- ◆ Average somatic cell count
- ◆ Average mastitis status
- ◆ MUN's (Milk Urea Nitrogen) on milk
- ◆ Linear Score

#### Manure

- ◆ Average manure consistency (better or worse)
- ◆ Changes in feed digestion
- ◆ Amount of undigested feed in stool (large, medium or small amount)
  - Screen manure for solids/fiber
    - Beginning of month (large, medium or small amount)
- ◆ End of month (large, medium or small amount)
  - Collect a sample each month (yes or no)
- ◆ Odor changes (smell – strong, medium or less)
- ◆ Fly change (yes or no)

#### Facility

- ◆ Did cleaning of facility improve? (yes or no)







# Eubio-NBS (RTU)

## Livestock Drinking Water Enhancer

### Poultry Operation

---

Evaluate or observe in a poultry operation; *Parameters to measure and evaluate during trial:*

#### A. Water consumption

#### B. Bird health

- ◆ Alertness and contentment
- ◆ Foot pad health
- ◆ Days to market
- ◆ Feed conversion
- ◆ Poor doers
- ◆ Death loss
- ◆ Blindness
- ◆ Bird cleanness
- ◆ Bird overall health
- ◆ Average slaughter weight
- ◆ Total condemn birds at slaughter plant
- ◆ Cellulitis





# Eubio-NBS (RTU)

## Livestock Feed Enhancer

### PRODUCT DESCRIPTION:

**Eubio-NBS (RTU)** is a feed enhancer that acts as a natural biological stimulant. It optimizes and stimulates the biological feed medium to help increase already existing natural processes that are essential to livestock operations.

Eubio-NBS (RTU) is designed to stimulate both anaerobic and aerobic environments.

Eubio-NBS (RTU) is biodegradable, non-toxic, non-hazardous, non-corrosive, non-irritating and does not require PPE.

### GUARANTEED ANALYSIS:

Biocatalyst liquid . . . . . 100%

### INGREDIENTS:

All natural biodynamic liquid supernate.

### USAGE, APPLICATION AND RATES:

Eubio-NBS (RTU) is applied at 64 oz per ton of feed. Add 64 oz of water to the 64 oz of Eubio-NBS (c10) for a total of one gallon of liquid applied per ton of feed.

### STORAGE:

Normal Warehousing. Product is freeze/thaw stable. Shelf life three years.

### LIMITATION OF LIABILITY:

Due to system variations and other additives that may be present, please discuss usage of Eubio-NBS (RTU) with our technical representative.

Eubio-NBS (RTU) has no known negative impact on natural biological processes.

**KEEP OUT OF REACH OF CHILDREN**

**Made in the U.S.A.**

