

# ProfitPro<sup>®</sup>AG Farm Report

July 2020

[Home](#)

[Manure Master](#)

[Contact Us](#)



More from Every Acre, Every Animal  
& Every Gallon of Manure

## Crop Management News

*Dr. Jim Ladlie, ProfitProAG President, presents part two of a series on*

### **THE FULL-CIRCLE REGENERATIVE & SUSTAINABLE CROP & LIVESTOCK PRODUCTION SYSTEM:**

**“A Natural Microbiological & Nutritional Approach to Enhanced Profitability.”**

Over the next several months, there will be discussion on how we can farm using natural technologies to improve soil health and control pests. Experienced growers and experts in a given technology will be asked to join in on the discussion.

Please join us for our free webinar the third Thursday of each month from 8 to 9 p.m. (CT). See directions on last page.

### **Part II**

### **Full-Circle Farming: Discover the Secrets of Practical, Regenerative Crop, Livestock Production**

#### **Regenerative Millennial Producers**

#### **“Spend Less & Get More”**

- 25 to 40 years old
- Social Media Minded

#### **Cycle of Success in Production Agriculture**

**Regenerative & Sustainable  
Farming Systems can be  
repeated indefinitely with a positive impact to the environment,  
food chain, grower profitability and consumer health.**

#### **It results in:**

- A net gain in soil productivity
- Carbon fixation in humus
- Nutrient density to food and fiber
- Improved air & water quality
- Sustainable & profitable animal production
- Net improvement in consumer health
- Improvement in profitability

#### **Key Takeaways:**

- Building healthy soil (think fencerow farming) is key to spending less and getting more.
- Profitable farming is all about balance.
- Start with fall crop residue recycling.



### **FREE Webinar**

#### **Agronomic/Livestock**

3<sup>rd</sup> Thursday of the Month

**July 16, 2020**

#### **Time**

8 to 9 pm Central Time

**Visit [www.profitproag.com](http://www.profitproag.com)**

To join the Webinar,  
click on the link provided in  
“Monthly News Webinar”

**For More Information  
or to find a Consultant  
in Your Area**

Call **1-888-875-2425**

Ask about the **ProfitMaster<sup>™</sup>**  
**Full-Circle System** and the  
**Manure Master<sup>™</sup> Program**

**[www.profitproag.com](http://www.profitproag.com)**



**Innovative Manure Management**

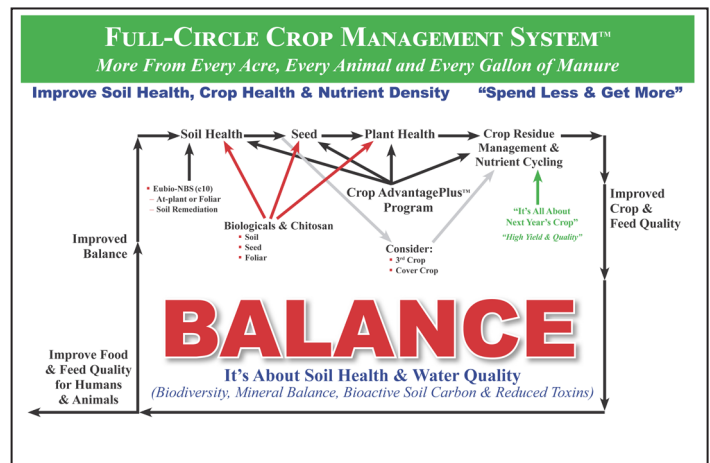
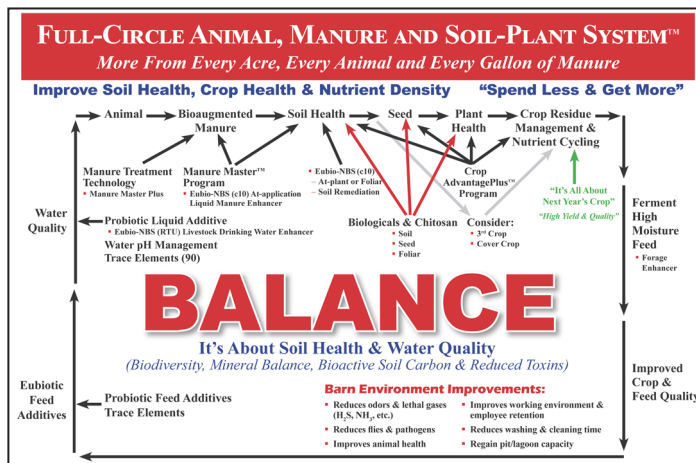
**[manuremaster.com](http://manuremaster.com)**

**“The Manure Treatment Experts”**

## During the Webinar, you'll learn about:

- 5 Things You Must Do to Control Costs & Boost ROI
- The 1 thing you must understand to put Mother Nature to work for you (healthy microbiome)
- 2 essentials that every sustainable farm requires (diverse crop rotation, cover crops)
- Top 4 things you must minimize to grow plants that naturally defend themselves from pests and disease (toxic materials; high salt fertilizer, anhydrous, pesticides)
- Why the tiniest factors often make the biggest difference to success (achieve nutrient balance and availability; trace elements)
- The easiest way to get started with the Full-Circle System (hint: the foundation is a fall crop residue digestion and recycling)

## Why balance is the key (and why it costs you when things get out of balance)



## Foundational Technologies:

- Microbiome
- Nutrition (emphasis on trace elements)

## Timelines & System Components:

- Fall
- Preplant
- At-plant
- In-season
- At harvest
- After harvest

## Natural Crop Management Technologies:

- Multi-species biologicals
- Natural biological stimulants
- Biological & nutritional seed treatments
- Natural biocontrol agents for insects, nematodes and diseases
- Natural nutritional supplements (including a sea mineral concentrate with 90 trace elements, a 4.5% silica concentrate & all natural ores such as soft rock phosphate, potassium sulfate & elemental sulfur)
- 16% humic & fulvic acid concentrate
- Liquid energy sources: molasses, sugar
- Crop rotation, cover crop strategies

## Fall Crop Residue Digestion & Recycling Program:

- Crop residue digestion, trapping the carbon (energy), nutrients and secondary microbial metabolites in the soil.
- Improved soil-to-seed contact, along with uniformity of seedling emergence and crop stands.
- Reduced or eliminated mycotoxins, root and foliar diseases, insect and weed pressure. Remember, pathogens and insects are nature's garbage collectors. They are there to take out the crops that are not worthy of reproducing. By building the bioactive carbon, biodiversity, nutrient balance and availability, and eliminating toxins, you'll reduce your cost of production over time. Yield, grain quality and profitability per acre will increase.
- Dramatic improvements in the health of the soil and soil food web including improved soil structure over time (aerobic zone), that allows for better drainage, aeration and nitrogen fixation.
- With residue digestion and improved soil structure, tillage can be reduced or eliminated (no-till).

### Eubio-NBS (Natural Biological Stimulant):

- ▶ Seed treatment
- ▶ Soil – preplant, at-plant, early post plant & foliar
- ▶ Fall residue program

### Eubio-NBS

Eubio = Healthy Ecosystem/Life  
NBS = Natural Biological Stimulant



*“Eubio Tec is a natural biostimulant that unleashes the innate energy source available in cellular life... providing major efficiencies and cost savings to industries using biological processes.”*

Dr. Jim Ladlie, ProfitProAG President

### Eubio-NBS TECHNOLOGY

Questions or comments?



### Applications in Agriculture

- ▶ Crop applications
- ▶ Soil remediation (toxins & salts)
- ▶ Livestock drinking water enhancer
- ▶ Feed enhancer
- ▶ Manure treatment – bioaugmentation
- ▶ At-application liquid manure enhancer
- ▶ Anaerobic biodigesters
- ▶ Aquaculture
- ▶ Ethanol
- ▶ Cranberry & wild rice patties



### Eubio-NBS Technology

#### What is it?

- A natural biological stimulant that works with existing microorganisms (communities) to optimize and accelerate already existing natural processes
- Balances and remediates soil, water and manure/waste media
- Non-toxic and environmentally safe for soil, water, air and animals

#### Soil Media

- Eubio-NBS acts as a soil conditioner by “establishing a balanced soil ecosystem”
- Improves soil’s ability to nourish plants
- Improves soil’s ability to absorb and hold water
- Improves soil tilth

#### The Idea Soil & Plant Enhancer

- When applied to crops, it triggers an explosion of beneficial microbes in the soil and foliage
- Eubio-NBS elevates plant defense mechanisms, which improves plant health, minimizes disease, insect pressure and weather related stress

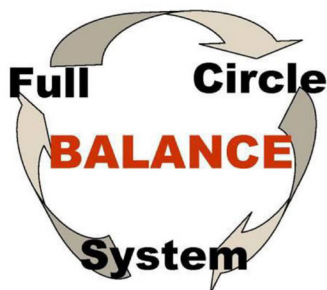
#### Eubio-NBS Soil Conditioning & Balancing

- Improves water utilization
- Improves nutrient uptake
- Improves unbalanced pH
- Improves soil aeration
- Improves soils over loaded with salts



### Eubio-NBS Technology

“Enhances the natural process of balancing living systems”



**Eubio-NBS** Eubio = Healthy Ecosystem/Life  
NBS = Natural Biological Stimulant

“A natural biological stimulant that works with existing microorganisms to optimize and accelerate already existing natural processes”

#### The Ideal Soil & Plant Enhancer

- Triggers an explosion of beneficial microbes in the soil and on plant foliage
- Improves the soil's ability to nourish plants, absorb and hold water
- Improves soil tilth
- Elevates plant defense mechanisms







## Eubio-NBS (c10) Soil & Plant Natural Biological Stimulant

**PRODUCT DESCRIPTION:**  
Eubio-NBS (c10) is a "Next Generation" Natural Biological Stimulant. It optimizes and stimulates the biological medium to help increase already existing natural processes that are essential for healthy soil and plants.

Eubio-NBS (c10) is biodegradable, non-toxic, non-hazardous, non-corrosive, non-irritating and does not require PPE.

**GUARANTEED ANALYSIS:**  
Biocatalyst liquid ..... 100%

**INGREDIENTS:**  
All natural biodynamic liquid supernate.

**USAGE AND APPLICATION RATE:**  
The application rate is 12.8 oz per acre [10 acres per gallon of Eubio-NBS (c10)] for both soil and foliar applications. It is recommended to apply a soil application and one to two foliar applications during the season depending on crop value.

**Soil Application:** Eubio-NBS (c10) can be applied as follows: broadcast or strip-tilled Fall or Spring, in furrow and through surface or subsurface irrigation.

**Foliar Application:** Eubio-NBS (c10) can be applied once or multiple times during the season at optimum vegetative and reproductive status of a crop.

**Manure Application:** Eubio-NBS (c10) can be mixed into liquid manure at the rate of 12.8 oz per acre [10 acres per gallon of Eubio-NBS (c10)].

**STORAGE:**  
Normal Warehousing. Product is freeze/thaw stable. Shelf life three years.

**LIMITATION OF LIABILITY:**  
Due to system variations and other additives that may be present, please discuss usage of Eubio-NBS (c10) with our technical representative.  
Eubio-NBS (c10) has no known negative impact on natural biological processes.

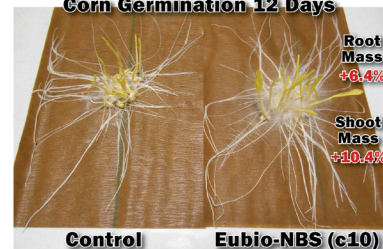


© 2020 ProfitPro, LLC. All rights reserved July Wehner, 7-16-20 24

## Eubio-NBS (c10)

Soil & Plant Natural Biological Stimulant

### Eubio-NBS (c10) effect on Corn Germination 12 Days

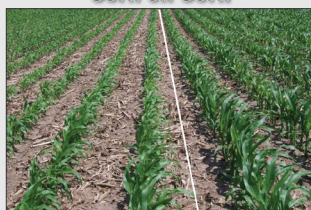


Control Eubio-NBS (c10)



© 2020 ProfitPro, LLC. All rights reserved July Wehner, 7-16-20 25

### Eubio-NBS (c10) applied in-furrow on corn at planting time Corn on Corn



Control

Eubio-NBS (c10)  
In-Furrow Application 12.8 oz/A



© 2020 ProfitPro, LLC. All rights reserved July Wehner, 7-16-20 26

### Eubio-NBS (c10) Applied to Corn In-furrow At-plant 12.8 oz/A

#### Observation on Corn:

Eubio-NBS (c10)	Control
• Increased rows on corn ears	• Tip back
• Increased ear length	• Less ear length
• Increased health	• Less healthy than Eubio-NBS (c10)
• Green leaves to ground	• Disease issues
• Improved stay green	• More ear mold
• Less ear mold	



© 2020 ProfitPro, LLC. All rights reserved July Wehner, 7-16-20 27

### Next Year Observations Corn on Corn:

- Less standing water on Eubio-NBS (c10) area
- Faster corn emergence
- Improved early crop vigor
- Stayed healthier throughout the season



© 2020 ProfitPro, LLC. All rights reserved July Wehner, 7-16-20 28

### The Ideal Soil and Plant Enhancer

- When applied to crops, it triggers an explosion of beneficial microbes in the soil and foliage.
- Balances soil, includes lowering salt levels.
- Eubio-NBS (c10) elevates plant defense mechanisms which improves plant health, minimizes disease, insect pressure and weather related stress.

Eubio-NBS (c10) applied in-furrow at 12.8 oz previous year on corn, followed by soybeans treated with Eubio-NBS (c10)



Neighbors



Eubio-NBS (c10)  
In-Furrow Application 12.8 oz/A



© 2020 ProfitPro, LLC. All rights reserved July Wehner, 7-16-20 29

## Eubio-NBS (c10)



Eubio-NBS (c10)

Control



© 2020 ProfitPro, LLC. All rights reserved July Wehner, 7-16-20 30

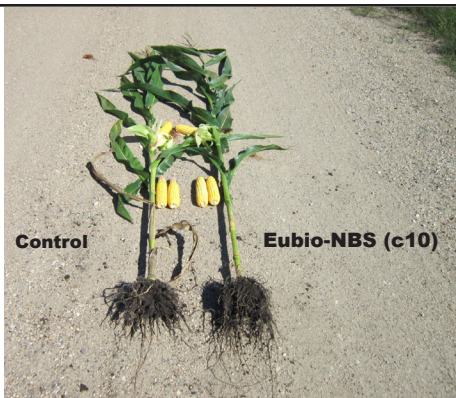
Control

Eubio-NBS (c10)



© 2020 ProfitPro, LLC. All rights reserved July Wehner, 7-16-20 31





**Biodyne® Microbial Products with & without Eubio-NBS™ on three Central Iowa Corn Fields**

Field #1 Photos taken June 17, 2020

**Larry Eekhoff & Bob Wagner checking Biodyne® & Eubio-NBS™ Treated Fields**



**Biodyne® Microbial Products with & without Eubio-NBS™ on three Central Iowa Corn Fields**

Field #1 Photos taken June 17, 2020



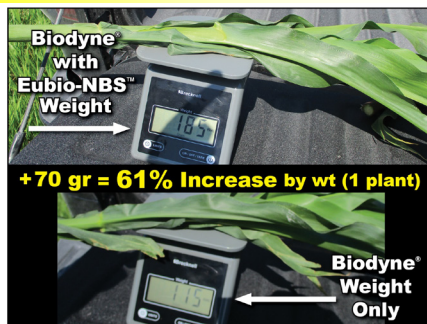
**Biodyne® Microbial Products with & without Eubio-NBS™ on three Central Iowa Corn Fields**

Field #1 Photos taken June 17, 2020



**Biodyne® Microbial Products with & without Eubio-NBS™ on three Central Iowa Corn Fields**

Field #1 Photos taken June 17, 2020



**Biodyne® Microbial Products with & without Eubio-NBS™ on three Central Iowa Corn Fields**

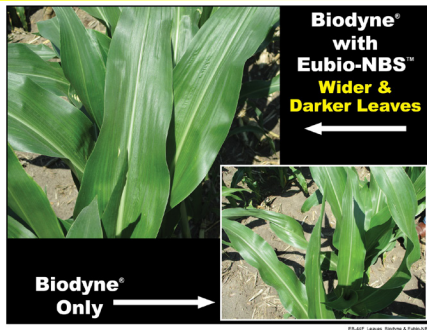
Field #1 Photos taken June 17, 2020





**Biodyne® Microbial Products with & without Eubio-NBS™ on three Central Iowa Corn Fields**

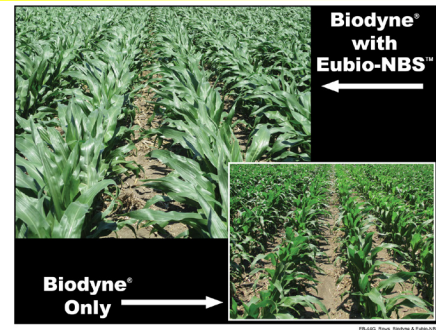
Field #2 Photos taken June 17, 2020



© 2020 ProFitPro, LLC. All rights reserved July Webinar\_7-16-20 40

**Biodyne® Microbial Products with & without Eubio-NBS™ on three Central Iowa Corn Fields**

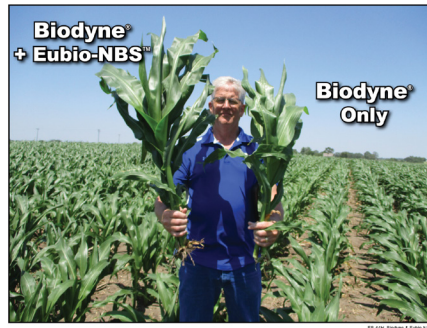
Field #2 Photos taken June 17, 2020



© 2020 ProFitPro, LLC. All rights reserved July Webinar\_7-16-20 41

**Biodyne® Microbial Products with & without Eubio-NBS™ on three Central Iowa Corn Fields**

Field #2 Photos taken June 17, 2020



© 2020 ProFitPro, LLC. All rights reserved July Webinar\_7-16-20 42

**Biodyne® Microbial Products with & without Eubio-NBS™ on three Central Iowa Corn Fields**

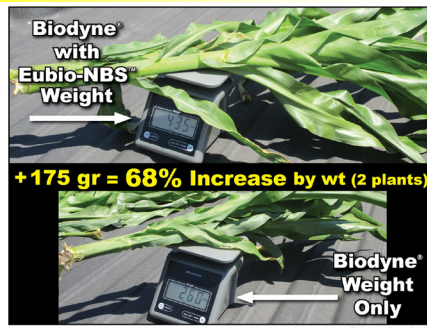
Field #2 Photos taken June 17, 2020



© 2020 ProFitPro, LLC. All rights reserved July Webinar\_7-16-20 43

**Biodyne® Microbial Products with & without Eubio-NBS™ on three Central Iowa Corn Fields**

Field #2 Photos taken June 17, 2020



© 2020 ProFitPro, LLC. All rights reserved July Webinar\_7-16-20 44

**Biodyne® Microbial Products with & without Eubio-NBS™ on three Central Iowa Corn Fields**

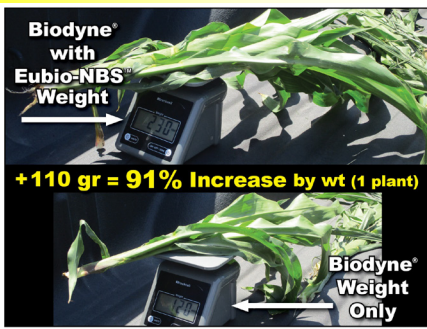
Field #3 Photos taken June 17, 2020



© 2020 ProFitPro, LLC. All rights reserved July Webinar\_7-16-20 45

**Biodyne® Microbial Products with & without Eubio-NBS™ on three Central Iowa Corn Fields**

Field #3 Photos taken June 17, 2020



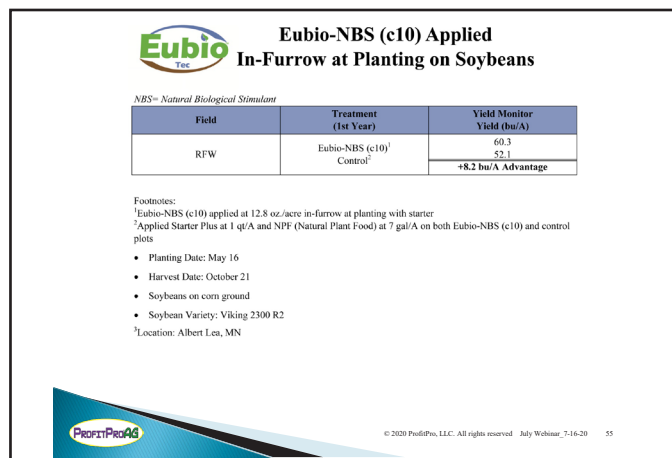
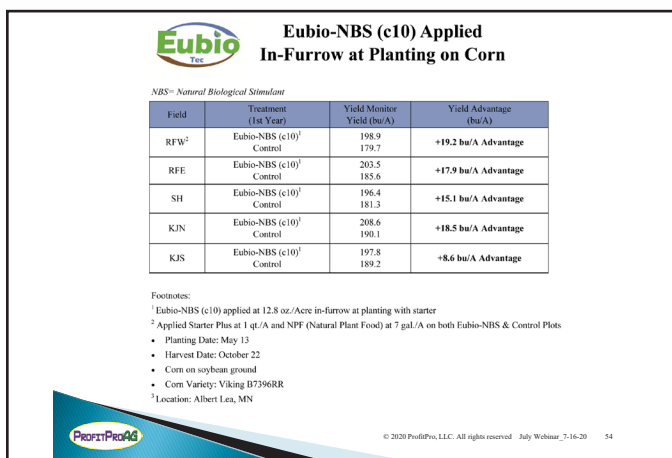
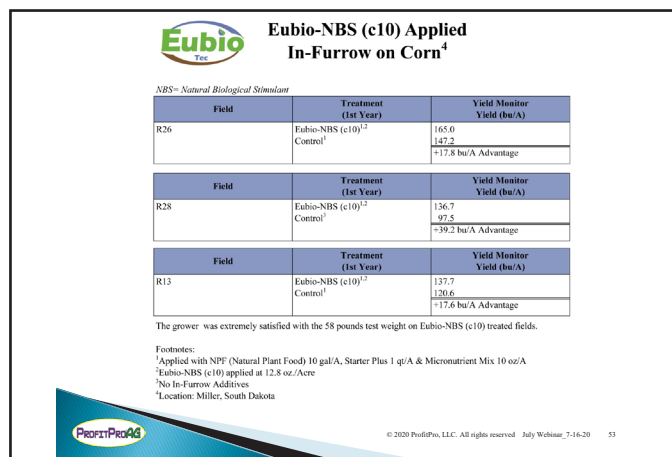
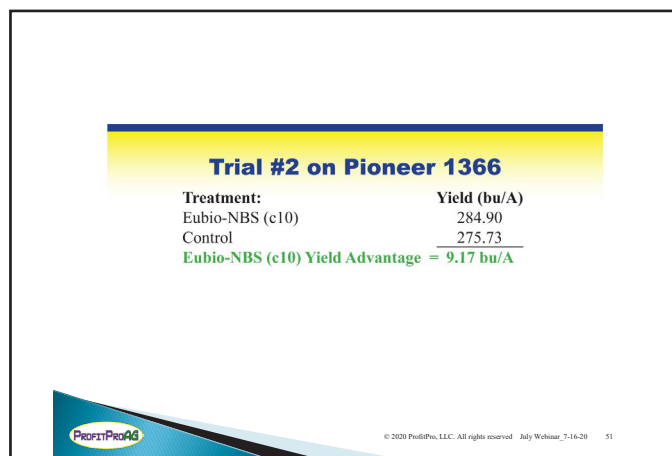
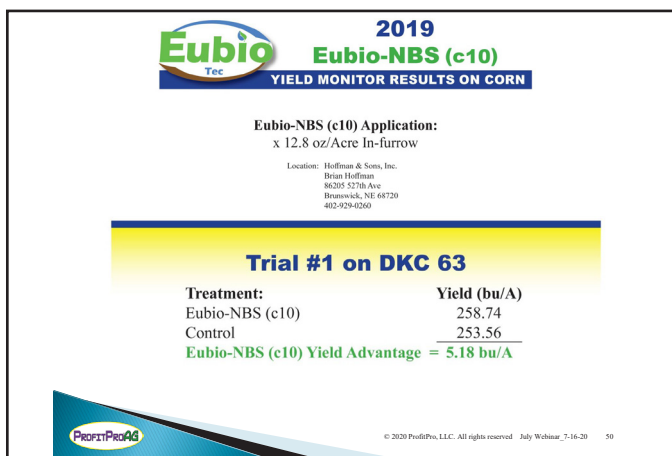
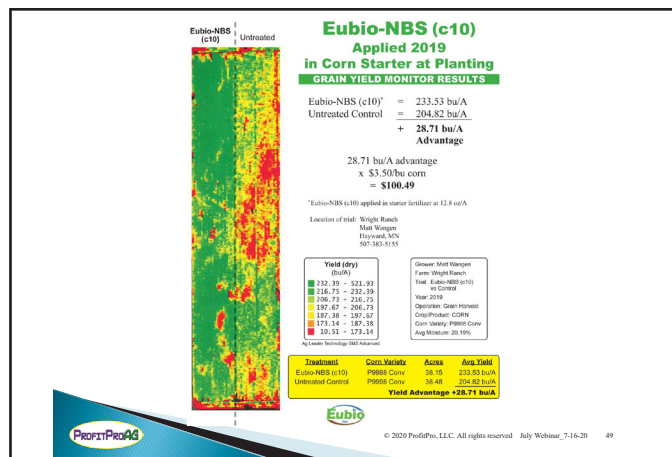
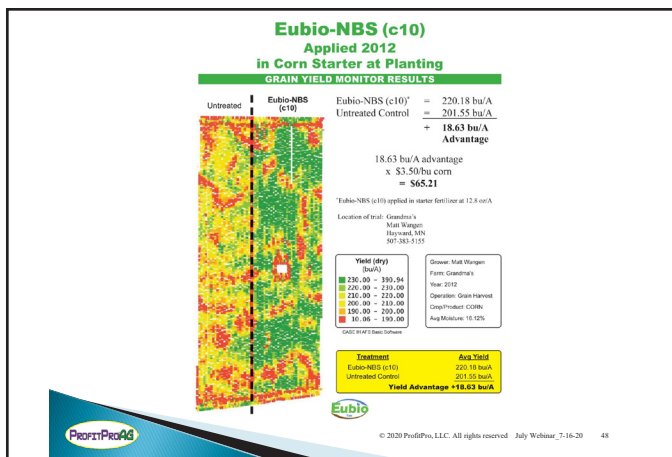
© 2020 ProFitPro, LLC. All rights reserved July Webinar\_7-16-20 46

**Biodyne® Microbial Products with & without Eubio-NBS™ on three Central Iowa Corn Fields**

Field #3 Photos taken June 17, 2020



© 2020 ProFitPro, LLC. All rights reserved July Webinar\_7-16-20 47







## Eubio-NBS (c10) Applied In-Furrow at Planting Time on Wheat

NBS = Natural Biological Stimulant



**ProfitPro's Program**  
NPF (Natural Plant Food)  
+ Starter Plus at 1 qt/A  
+ MicroNutrient Mix at 10 oz./A  
+ Eubio-NBS (c10) at 12.8 oz./A

Millersdale Colony  
Miller, South Dakota



© 2020 ProfitPro, LLC. All rights reserved July Webinar\_7-16-20 56



## Eubio-NBS (c10) Applied In-Furrow at Planting on Winter Wheat

NBS = Natural Biological Stimulant

Treatment	In-field Program	Rate/Acre	Yield (bu/A)	Moisture	TW	Cost/Acre	Return/Acre
Commercial	11-52-0	60 lbs.	64.0	14.2%	60.7	\$22.40 (0.39/lb. 11-52-0)	\$352.00 (64.0 bu x \$5.50/bu)
ProfitPro's	NPF + Starter Plus + Eubio-NBS (c10)	10 gallons 1 qt. 12.8 oz.	72.5	13.5%	60.3	\$16.75 <sup>1</sup>	\$398.75 (72.5 bu x \$5.50/bu)
<b>Difference</b>			<b>8.5 bu/A</b>	<b>0.7%</b>	<b>-0.4</b>	<b>-\$6.65<sup>2</sup></b>	<b>\$46.75<sup>3</sup></b>

Footnotes:

<sup>1</sup>NPF (Natural Plant Food) (Owned) + Starter Plus = Eubio-NBS (c10) = \$10.00/A + \$16.75/A

<sup>2</sup>Location: Millersdale Colony, South Dakota

<sup>3</sup>Bottom Line Increase Return = \$53.40/acre (\$46.75 yield advantage + \$6.65 cost advantage)



© 2020 ProfitPro, LLC. All rights reserved July Webinar\_7-16-20 57

## Yield and Quality Benefits of adding Eubio-NBS (c10) to NPF<sup>®</sup> applied in-furrow on corn

- + 90 lbs Nitrogen applied on all plots
- + Corn on corn
- + 4 replications (yield)

NPF = Natural Plant Food which is completely digested livestock manure  
NBS = Natural Biological Stimulant

Treatment	EC	Application Rate/A	Brix 8-8/97	Yield Advantage
NPF	4.3	10 gal	12.3	117%
NPF + Eubio-NBS (c10)	4.3	10 gal + 12.8 oz	14.8	128%
Control	---	---	8.9	100%

EC (electrical conductivity) measures the salt content of manure. The lower the number, the lower the salt content.



© 2020 ProfitPro, LLC. All rights reserved July Webinar\_7-16-20 58

## Electrical Conductivity (EC) Measurement

Electrical conductivity (EC) is a way to measure salt content of liquid manure. Raw manure starts at approximately 30 EC and completely digested manure (no solids and a brown color) will have an EC of 6 to 7. At an EC of 6 to 7, the bioaugmented manure can be used as a starter or foliar fertilizer. At an EC of 12, the bioaugmented manure can be irrigated on standing crops or soil applied and planted immediately.

## BRIX Evaluations of your crops

Measuring BRIX is one of the simplest ways to evaluate crop health and productivity. Brix is measured with a refractometer that measures (scale 0 to 32) total dissolved solids in plant sap (Brix).

Brix is a sum of the pounds of sucrose, fructose, vitamins, minerals, amino acids, proteins, hormones and other solids in one hundred pounds of plant juice. Brix varies directly with plant quality. For instance, a poor, sour tasting grape from worn-out land can test 8 or less brix. On the other hand, a full flavored, delicious grape, grown on rich, fertile soil can test 24 or better brix.



Visual Refractometer<sup>+</sup>



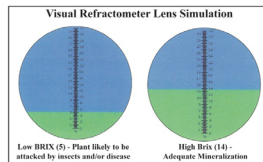
© 2020 ProfitPro, LLC. All rights reserved July Webinar\_7-16-20 59

## Low Brix levels

(<12) can indicate a lack of balanced nutrients within the plant and/or the effect of environmental stress factors due to poor growing conditions (wet soils, cloudy weather, etc.) or low fertility. Low BRIX (<12) plants are more likely to be attacked by insects and/or disease. Brix readings of >12 indicate good plant health.

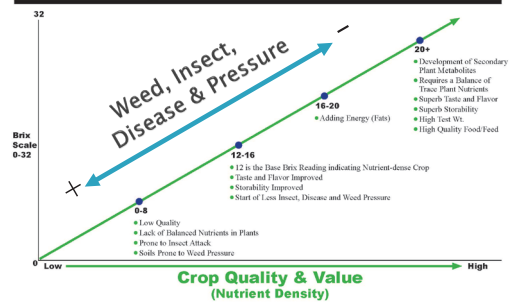
## Plant Sap pH Measurements

A pH meter measures acidity of soils and plant sap. Plant sap with a pH <6.4 indicates a need for Ca, Mg, K or Na. A pH >6.4 indicates a need for phosphates or sulfates. After balancing mineral deficiencies, Brix readings will also increase and crop performance will improve.



© 2020 ProfitPro, LLC. All rights reserved July Webinar\_7-16-20 60

## Growing High Brix Crops is Dependent on Soil Health



© 2020 ProfitPro, LLC. All rights reserved July Webinar\_7-16-20 61



## Eubio-NBS (c10) Soil Remediation Technology

### PRODUCT DESCRIPTION:

Eubio-NBS (c10) is a Natural Biological Stimulant. It is a "Next Generation" Soil Remediation Technology. It optimizes and stimulates the biological medium to help increase already existing natural processes that are essential to soil remediation.

Eubio-NBS (c10) is biodegradable, non-toxic, non-hazardous, non-corrosive, non-irritating and does not require PPE.

### GUARANTEED ANALYSIS:

Biocatalyst liquid ..... 100%

### INGREDIENTS:

All natural biodynamic liquid supernate.

### USAGE AND APPLICATION RATE:

The application rate is 1 gallon per acre broadcast Fall or Spring. To hasten the soil remediation process, multiple applications over time can be made, depending on the condition of the soil and recovery time desired.

### STORAGE:

Normal Warehousing. Product is freeze/thaw stable. Shelf life three years.

### LIMITATION OF LIABILITY:

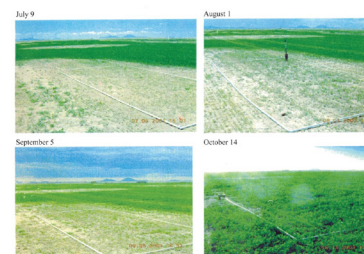
Due to system variations and other additives that may be present, please discuss usage of Eubio-NBS (c10) with our technical representative.

Eubio-NBS (c10) has no known negative impact on natural biological processes.



© 2020 ProfitPro, LLC. All rights reserved July Webinar\_7-16-20 62

## Eubio-NBS (c10)'s effect on establishing alfalfa on high salt soils. Oklahoma



**Eubio-NBS (c10) remediates salt in irrigated water and soil.**



© 2020 ProfitPro, LLC. All rights reserved July Webinar\_7-16-20 63

**ProfitPro®AG invites YOU to their**  
**FREE WEBINAR**  
**the third THURSDAY of each month.**

**A cost-effective and convenient way to gain knowledge  
on new crop production technologies**

**It's Easy . . . It's FREE**  
**Thursday, July 16, 2020**  
**8:00 p.m. Central Time**

**UPCOMING SUBJECTS**

- **Full-Circle Farming: Discover the Secrets of Practical, Regenerative Crop, Livestock Production**
- **Eubio-NBS (Natural Biological Stimulant)**

Dr. Jim Ladlie, *ProfitProAG President* will discuss the upcoming subjects and answer questions.

---

For more information visit [www.profitproag.com](http://www.profitproag.com)  
and click on "Monthly News Webinar"

**TO JOIN THE WEBINAR, CLICK ON THE LINK PROVIDED**

---

Next month (Part III) we will discuss the benefits adapting the Fall Crop Residue Digestion and Recycling Program. Growers and experts who are practicing the Full-Circle System will be invited to share their success stories.

We will no longer be using the teleconference format for our monthly teleconferences, instead we have upgraded to a new webinar format. This allows us to have a much better presentation with visual graphics and better interaction with our presenters and attendees. It also allows us flexibility to archive the webinar and publish it on our website for future viewing. We hope this will make for a better overall user experience. If there are longtime teleconference members that might be disappointed in this upgrade, we would like to hear from you and find out your opinions and see if we can accommodate your needs. You can contact us through the website or just give us a call at 507-373-2550. Thanks for your past and continued support. We are excited to be able to bring you the best information in the most accessible format we can.