



# 2022 Early Order Product Cash Discount Program

- This 2022 crop discount program includes the ***Farming the Controllables*** "Recipe for Success," **Crop Production System** and the **Fall Crop Residue Digestion Program**.
- All products for conventional and organic operations (exceptions listed below)<sup>3</sup>.

Deadline Discount Dates	2022 Retail Early Order Product Cash Discount <sup>1,2</sup>
September 1 – 30, 2021	12%
October 1 – 15, 2021	10%
October 16 – 31, 2021	9%
November 1 – 15, 2021	8%
November 16 – 30, 2021	7%
December 1 – 15, 2021	6%
December 16 – 31, 2021	5%
January 1 – 15, 2022	4%
January 16 – 31, 2022	3%
February 1 – 29, 2022	2%

<sup>1</sup>Cash or check **must be** received by discount deadline date for percent discount desired. Discounts **do not** apply to freight.

<sup>2</sup>Freight to be invoiced at time of shipping.

<sup>3</sup>Products and services **NOT** included in the 2022 Early Order Product Cash Discount Program.

- Commercial fertilizers
- Manure pit treatment products
- Human products
- Manure treatment services

**For more information or to place an order call:**

**Dennis Klockenga** - 320-333-1608 (cell) / [dklockenga@profitproag.com](mailto:dklockenga@profitproag.com)

**John Pernat** – 920-285-2400 (cell) / [johndpernat@gmail.com](mailto:johndpernat@gmail.com)

**Dr. Jim Ladlie** – 507-383-1325 (cell) / [jladle@profitproag.com](mailto:jladle@profitproag.com) or call ProfitProAG at 507-373-2550

**Chris Chodur** – 507-402-4195 (cell) / [cchodur@profitproag.com](mailto:cchodur@profitproag.com)



**More from Every Acre, Animal & Gallon of Manure**

ProfitPro, LLC ♦ 408 S. 1st Ave. ♦ Albert Lea, MN 56007 ♦ 507-373-2550 ♦ Fax: 507-373-2520 ♦ Email: [info@profitproag.com](mailto:info@profitproag.com) ♦ GN-54\_9-15-21

[www.profitproag.com](http://www.profitproag.com) ♦ [manuremaster.com](http://manuremaster.com)

# Introduction to the “Recipe for Success” Program for Corn, Soybeans, Cereal Grains & Forages Big Yields Start with a “Recipe for Success”



Would you jump on an opportunity to increase yields and test weights on your crops while saving time? By attending ProfitProAG’s Workshop and Field Event on **Thursday, September 9<sup>th</sup> and Friday, September 10<sup>th</sup>**, you’ll learn about the three phases to customize your 2022 Farm the Controllables “Recipe for Success” (refer to chart on the backside). These phases include:

- **Phase I      Residue Management–“Second Harvest”**

This “second harvest” focuses on efficient breakdown of crop residue to improve soil health and boost nutrient retention/availability, nitrogen fixation, water infiltration, and carbon release to feed the crop during the growing season, while reducing residual insect and disease pressure. The key benefit is improved nutrient cycling from the crop residue, which can help lower your fertilizer bill.

- **Phase II      At-Plant–“Jump Start Yield”**

Jump start your yield, and get your crop off to a strong start with early-season plant health and vigor. Biological seed coatings and the right starter package offer supply key nutrients to seedlings and enhance plant health all season-long. Establishing healthy plants below and above ground is critical to maximizing the crop’s genetic yield potential.

- **Phase III      In-Season–“Stay Green”**

This “stay green” phase is designed to mitigate plant stress, which is critical when the reproductive phase of yield development begins. Foliar application of nutrients, energy and stress-reducing technology builds resilience and uniformity in a crop-production system. The end result is increased seed numbers, weight and nutrient density in grains. Forages show improved nutrient content, energy, taste, storability and reduced mycotoxins.

ProfitProAG is offering a cash discount based on the degree of adoption of the “Recipe for Success” in corn, soybean, cereal grain and forage production for 2022.

## **Drones put you in control for in-season field applications**

- Timely applications    • Less in-field soil compaction & crop damage



# Farm the Controllables

Big Yields start with a **"Recipe for Success"**

ProfitProAG's **Recipe for Success** maximizes the resources that lead to the greatest full-season plant potential.



## Phase I:

### Residue Management – A "Second Harvest"

Improves soil health, nutrient retention, water quality and profitability.

## "Second Harvest"



## Phase II:

### At-Plant – "Jump Start Yield"

Early season plant health & vigor.

## "Jump Start Yield"

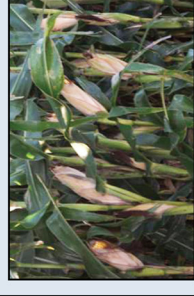


*More from Every Acre, Animal & Gallon of Manure*

Phase III: In-Season – "Stay Green"

through in-season stress mitigation

## "Stay Green"



**With the "Recipe for Success," your crops will be easier to manage!**

In addition to the targeted soil & crop nutrient benefits of the **"Recipe for Success,"** another key benefit is the time you'll save in each of the three management phases.

You'll receive a blend of multiple products in a tote with rate-per-acre application instructions.

**No boxes, jugs or extensive mixing time required to get the application done!**





More from Every Acre, Animal & Gallon of Manure

# Farm the Controllables

## Phase I: Crop Residue Management

This “second harvest” focuses on efficient breakdown of crop residue to improve soil health and boost nutrient retention/availability, nitrogen fixation, water infiltration, and carbon release to feed the crop during the growing season, while reducing residual insect and disease pressure. The key benefit is improved nutrient cycling from the crop residue, which can help lower your fertilizer bill.

### Cost offsets for the Crop Residue Digestion Program

**Reduce costs and boost profit potential with:**

- Enhanced soil structure, aerobic zone & water infiltration
- Less tillage and less horsepower required
- Reduced tire & equipment wear
- Ability to no-till
- Better planter performance (less hair pinning and plugging)
- Soils that warm up sooner for earlier planting
- Improved seed-to-soil contact and final stands
- Improved nitrogen fixation and availability
- Improved nutrient availability and balance throughout the growing season
- Nutrient recycling in residue, which can reduce purchased crop inputs
- Building organic matter, which anchors nutrients to your farm
- Reduced iron chlorosis
- Capturing more carbon in the soil to build organic matter
- Improved sugar production when plants capture more CO<sub>2</sub> from the soil
- Reduced need for insecticides and fungicides
- Enhanced herbicide activity & weed control
- Reduced weed pressure over time
- Reduced volunteer corn
- Enhanced soil biodiversity
- Reduced soil toxins
- Improved cover crop benefits
- Carbon sequestration credits (if available)
- Enhanced yield and crop quality



**“Undigested crop residue carry over from the previous year(s), can reduce crop yields up to 30%.”**

**Corn on Corn  
Residue Management**



**Soybeans on Corn  
Residue Management**



Digested Residue



Undigested Residue





More from Every Acre, Animal & Gallon of Manure

## Crop Residue Digestion Program

A “second harvest” that improves crop residue management, soil health, nutrient retention, water quality, profitability and sustainability.

### This program will set the stage for:

- Crop residue digestion, trapping the carbon (energy), nutrients and secondary microbial metabolites in the soil.
- Dramatic improvements in soil health and the soil food web, including improved soil structure over time, that allows for better drainage, aeration and nitrogen fixation.
- Reduced or eliminated mycotoxins, root and foliar diseases, insect and weed pressure. Remember, pathogens and insects are nature’s garbage collectors. They are there to take out the crops that are not worthy of reproducing. By eliminating toxins and building the bioactive carbon, biodiversity, nutrient balance and nutrient availability, you’ll reduce your cost of production over time. Yield, grain quality and profitability per acre will increase.
- Improved soil-to-seed contact, along with uniformity of seedling emergence and crop stands.
- Reduced tillage (strip-till) or no-till, due to residue digestion and improved soil structure. Tillage can be reduced (strip-till) or eliminated (no-till).
- The opportunity to receive carbon sequestration credits.

### Residue management, by the numbers:

- 4 tons of residue per acre are left behind on a 180-bushel corn crop.
- 2.1 tons of corn roots are in each acre too.
- 80-30-190 (the N-P-K contained in those 4 tons of corn residue).
- 16 pounds of sulfur, 35 pounds of calcium and 25 pounds of magnesium are in those 4 tons, too.



Fungal Corn Residue Digestion

**“Undigested crop residue carry over from the previous year(s), can reduce crop yields up to 30%.”**

**Corn on Corn  
Residue Management**



**Soybeans on Corn  
Residue Management**



Digested Residue



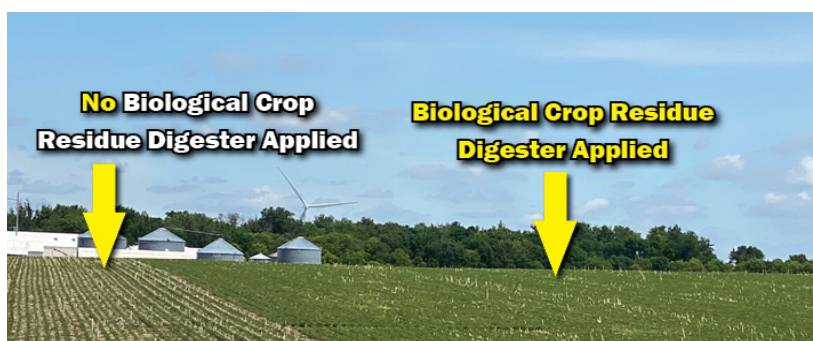
Undigested Residue

## The Crop Residue Digestion Program Team

1. **BioRegenerate™** is a mixture of 25 microbes, including organic crop residue digesters, organic acids and nitrogen. It's designed to break down cellulose and lignin found in tough-to-digest corn stalks.
2. **Eubio-NBS (c10)** is a natural biological stimulant that works with existing microorganisms and applied microbes to speed up the crop residue digestion process. It boosts the microbes to multiply faster, increasing digestive enzymes and secondary metabolite production. This enhances the residue digestion process and soil food web. As a soil conditioner, Eubio-NBS (c10) improves water infiltration, boosts aeration and enhances nitrogen fixation. It also addresses unbalanced pH levels, soils overloaded with salts and nutrient availability.
3. **Pacific Gro (2-1-0.3)** is seafood for the soil. This liquid fish formulation provides a diverse diet to fungi and beneficial microbes. It contains a highly soluble source of calcium, amino acids (13% protein), chitosan, 13% oils and fats. Fungi drive crop residue digestion, promote soil carbon sequestration and enhance soil bioactive carbon. The chitosan content acts as a biopesticide that boosts plants' natural ability to defend themselves against pathogenic microbes, insects and parasitic nematodes.
4. **Sea-Crop®** is composed of more than 90 naturally occurring elements and minerals derived from pristine seawater. These minerals, and the equally important trace elements, act as enzyme activators, growth stimulators, biological stimulants and a catalyst to form other nutrients in plants. The trace elements in Sea-Crop enhance the microbial crop residue digestion process. The goal in a complete residue digestion program is to produce healthy crops that are naturally disease and pest resistant, with exceptional taste, flavor and nutrient density.
5. **Bio-Release™** acts as a compatibility agent, helps unlock unavailable plant nutrients in the soil and stimulates the soil microbiome. Bio-Release is especially effective at stimulating fungi that break down crop residue.
6. **Molasses** is a source of energy and minerals to stimulate beneficial microorganism and boost nutrient availability, crop residue digestion and plant growth.



The combination of these ecologically-friendly soil and plant technologies speeds the complete digestion of crop residue and primes the environment to produce nutrient-dense, high-energy crops.



**Apply after harvest on top of the crop residue, cover crops & manure:**

### Option 1:

Products	Rate/Acre	Cost/Acre
1. BioRegenerate (microbial blend)	32 oz	\$8.89
<b>Total Rate/Acre = 32 oz</b>		

*Note: can be shipped in 5 gallon jugs or tote*

### Option 2:

Products	Rate/Acre	Cost/Acre
1. BioRegenerate (microbial blend)	24 oz	\$13.62
2. Eubio-NBS (c10) (biostimulant)	10 oz	
<b>Total Rate/Acre = 34 oz</b>		

*Note: can be shipped in 5 gallon jugs or tote*

### Option 3:

Products		Rate/Acre	Cost/Acre
1.	BioRegenerate (microbial blend)	24 oz	\$21.02
2.	Eubio-NBS (c10) (biostimulant)	10 oz	
3.	Pacific Gro (2-1-0.3) (liquid fish)	25 oz	
4.	Sea-Crop (90 trace minerals)	10 oz	
5.	Bio-Release (nutrient solubilizer/stabilizer)	8 oz	
6.	Molasses (energy & minerals)	51 oz	
		<b>Total Rate/Acre = 128 oz (1 gal)</b>	

*Note: can be shipped in 5 gallon jugs or tote*

**Optional:** If heavy pressure from insects, diseases or nematodes occurred during the growing season, add BiolImpact+, a chitosan product, to your crop residue digestion program. Research shows that the chitosan technology acts as a biocontrol agent, reducing pest pressure in next year's crop. When applying chitosan products, you must lower spray solution pH to 5.0 or below.

Products		Rate/acre	Cost/acre
1.	BiolImpact+ (chitosan)	16 oz to 32 oz	\$3.35 - \$6.70

*Note: can be shipped in 5 gallon jugs or tote*

### Crop Residue Digestion Programs, Cover Crops and Manure Applications

The combination of a crop residue digestion program and cover crops is the ultimate in achieving healthy soil, higher crop yield potential and enhanced crop quality. These regenerative, sustainable practices will improve your short-term and long-term profitability.

Even if a cover crop program isn't implemented, the crop residue digestion program will allow you to achieve many benefits of a cover crop program, including biodiversity, building bioactive carbon, nutrient balance/availability, lower pest pressure and reduced soil toxins.

The crop residue digestion program applied before or after manure applications (liquid or dry) will enhance the in-field digestion and utilization of the manure.

### Cost offset for the crop residue program

Reduce costs and boost profit potential with:

- Enhanced soil structure, aerobic zone & water infiltration
- Less tillage and less horsepower required
- Reduced tire & equipment wear
- Ability to no-till
- Better planter performance (less hair pinning and plugging)
- Soils that warm up sooner for earlier planting
- Improved seed-to-soil contact and final stands
- Improved nitrogen fixation and availability
- Improved nutrient availability and balance throughout the growing season
- Nutrient recycling in residue, which can reduce purchased crop inputs
- Building organic matter, which anchors nutrients & moisture to your farm
- Reduced iron chlorosis
- Capturing more carbon in the soil to build organic matter
- Improved sugar production when plants capture more CO<sub>2</sub> from the soil
- Reduced need for insecticides and fungicides
- Enhanced herbicide activity & weed control
- Reduced weed pressure over time
- Reduced volunteer corn
- Enhanced soil biodiversity
- Reduced soil toxins
- Improved cover crop benefits
- Carbon sequestration credits (if available)
- Enhanced yield and crop quality

## Fence-Line Farming — It's All About the Microbes & Soil Health





# BioRegenerate™

## Crop Residue Digester

**Undigested residue is a physical tie up of your investment dollars. Recycle your nutrition and turn residue into a valuable resource for next year's crop.**

**BioRegenerate** is the most complete and advanced tool for managing all types of crop residue. It delivers enhanced residue breakdown powered by a natural team of residue digesting microorganisms. This all-in-one residue management product combines viable and capable microbes with organic acids to degrade crop residue and complex organic compounds. This enhanced biological breakdown allows drills and planters to slice through residue instead of bouncing over it; reduces hair pinning, promotes optimal seed placement, faster soil warm-up in the spring, uniform emergence and an optimized stand. **BioRegenerate** enhances the return of micro and macro nutrients from the residue to the soil and can help drive CO<sub>2</sub> cycling, promote higher yields and healthier soil. Apply **BioRegenerate** to reclaim your investment dollars currently tied up by crop residue in your fields.

### INGREDIENTS:

Active Ingredients	Percent
Mixture of microbial strains	5.35% (nominal)
<b>Other Ingredients:</b>	
Organic Acid	.026%
Water	94.39%
Total	100%



### Improve the Biological Degradation of Crop Residue

- Crop residue leftovers from last season's harvest could be considered a real nuisance. From increased fertilizer use to tire damage and fuel consumption, undigested residue is a physical tie up of your investment dollars. Recycle your nutrition and turn residue into a valuable resource for next year's crop.
- When you end your season with an application of BioRegenerate, you're already starting the next season off right. Not only are you increasing the workability of the soil and the ease of planting the next crop, but you're also helping to reduce wear and tear on your tires and equipment caused by typically tough crop residue.
- The microorganisms in this product will degrade crop residue and complex organic compounds. This enhanced biological breakdown can help drive CO<sub>2</sub> cycling, promote higher yields and healthier soil.

**Residue Management =  
Improved Planting Efficiency & Healthier Plants**

**SUGGESTED APPLICATION:** **BioRegenerate** can be applied to all types of crop residue. For best results, shake before using since settling can occur. If combining with other products avoid having them mixed together for extended periods of time. Some chemicals can be detrimental to the microbes. If mixing with other products, it is best to mix shortly before the application (just in time). Perform a jar test to ensure compatibility.

**Crop Residue:** Apply **BioRegenerate** at 32 ounces/acre broadcast to crop residue one time in fall or early spring. To enhance performance, apply with Eubio-NBS (c10) at 10 oz per acre. If mixing **BioRegenerate** with 10 oz/A of Eubio-NBS (c10), the **BioRegenerate** rate can be reduced to 24 oz/A. Eubio-NBS (c10) is a natural biological stimulant that can enhance the microbial crop residue digestion process. Applications with Pacific Gro (2.0-1.0-0.3) fish fertilizer, with high oils and protein and/or BioImpact (Chitosan), will enhance the fungal digestion of crop residue. Apply in 10 to 15 gallons water per acre.

**STORAGE:** Store at room temperature or below. DO NOT FREEZE. Product may have a strong odor due to microbial activity.

KEEP OUT OF REACH OF CHILDREN.

**Reclaim your investment dollars and the power of your soil by leveraging the benefits of naturally occurring microorganisms.**



**More from Every Acre, Animal & Gallon of Manure**

ProfitPro, LLC ♦ 408 S. 1st Ave. ♦ Albert Lea, MN 56007 ♦ 507-373-2550 ♦ Fax: 507-373-2520 ♦ Email: info@profitproag.com ♦ TS-129\_8-26-21

**www.profitproag.com ♦ manuremaster.com**



# Crop Residue Digester Blend

***Undigested residue is a physical tie up of your investment dollars.  
Recycle your nutrition and turn residue into a valuable resource for next year's crop.***

**Crop Residue Digester Blend (CRDB)** is the most complete and advanced tool for managing crop residue. It delivers enhanced residue breakdown powered by a natural team of residue digesting microorganisms. This all-in-one residue management product combines viable and capable microbes with a blend of BioRegenerate, Eubio-NBS (c10), Pacific Gro (2-1-0.3), Sea-Crop, Bio-Release and Molasses to degrade complex polymers such as Cellulose, Lignin, Chitin and related compounds. This enhanced biological breakdown allows drills and planters to slice through residue instead of bouncing over it; reduces hair pinning, promotes optimal seed placement, uniform emergence and an optimized stand. **CRDB** enhances the return of micro and macro nutrients from the residue to the soil and will help drive CO<sub>2</sub> cycling, promote higher yields and healthier soil. Deploy **CRDB** to reclaim your investment dollars currently tied up by residue in your fields.

## INGREDIENTS:

### A blend of

- BioRegenerate
- Eubio-NBS (c10)
- Pacific Gro (2-1-0.3)
- Sea-Crop
- Bio-Release
- Molasses

**SUGGESTED APPLICATION:** CRDB is for agricultural field stubble/crop residue digestion. For best results, shake before using since settling can occur. If combining with other products avoid having them mixed together for extended periods of time. Some chemicals can be detrimental to the microbes. If mixing with other products, it is best to mix shortly before the application (just in time). Perform a jar test to ensure compatibility.

**Field Stubble:** Apply CRDB at 1 gallon/acre broadcast to field stubble one time in fall/early spring.

### Best results are achieved with no tillage or post tillage.

- Apply CRDB at 1 gallon/acre as a stand alone application with 10 to 15 gallons of water as a carrier or added to your fall or spring burndown.
- CRDB's complete formulation is tank mix ready allowing you to get more value from your burndown application.
- CRDB can be applied to all types of crop residue.

**STORAGE:** Store at room temperature or below. DO NOT FREEZE. Product may have an odor due to microbial activity.

## Improve the Biological Degradation of Crop Residue

- Crop residue. Stubble. Waste. The leftovers from last season's harvest could be considered a real nuisance. Undigested residue is a physical tie up of your investment dollars. Recycle your nutrition and turn residue into a valuable resource for next year's crop.
- When you end your season with an application of Crop Residue Digester Blend, you're already starting the next season off right. Not only are you increasing the workability of the soil and the ease of planting the next crop, but you're also helping to reduce wear and tear on your tires and equipment caused by typically tough crop residue.
- The capable microorganisms in Crop Residue Digester Blend will degrade complex polymers such as Cellulose, Lignin, Chitin, their intermediates and related compounds. This enhanced biological breakdown will help drive CO<sub>2</sub> cycling, promote higher yields and healthier soil.

**KEEP OUT OF REACH OF CHILDREN**



**No Biological Crop  
Residue Digester Applied**

**Biological Crop Residue  
Digester Applied**

**RESIDUE  
MANAGEMENT =  
Improved Planting Efficiency &  
Healthier Plants**